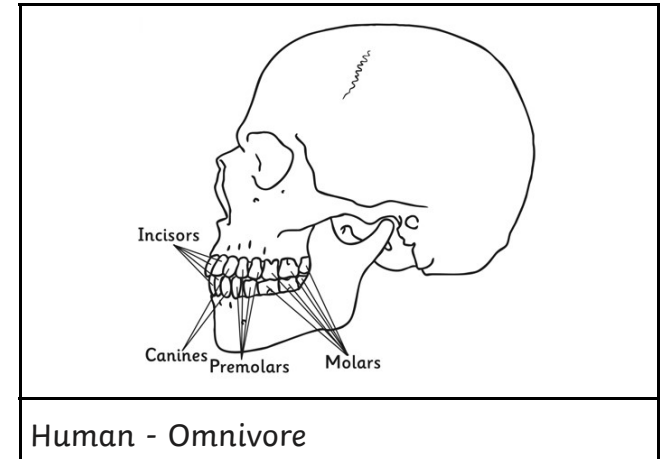
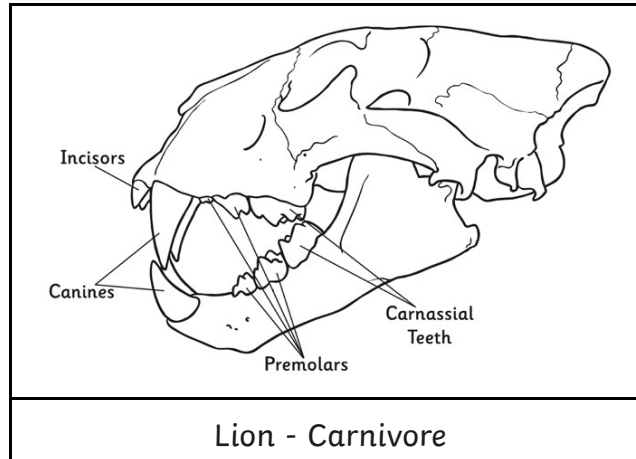
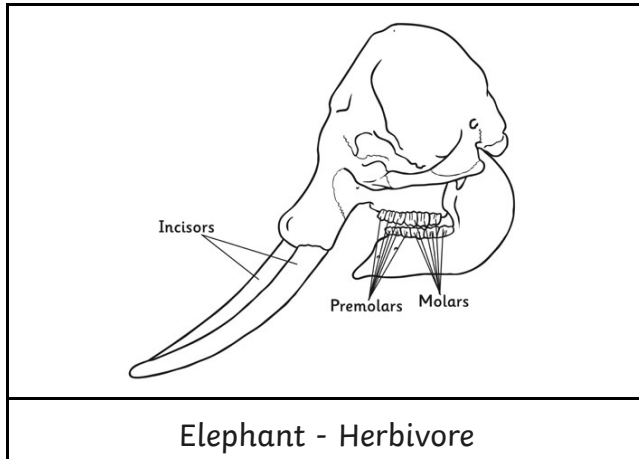


# Comparing Animal Teeth

I can identify the types and functions of teeth.

I can identify similarities and differences related to scientific ideas.



What are the differences in the type of teeth these animals have?

---

---

What would happen if the lion had teeth like an elephant?

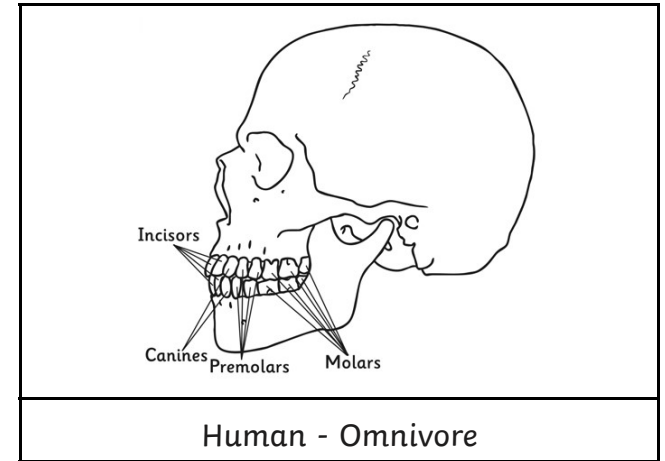
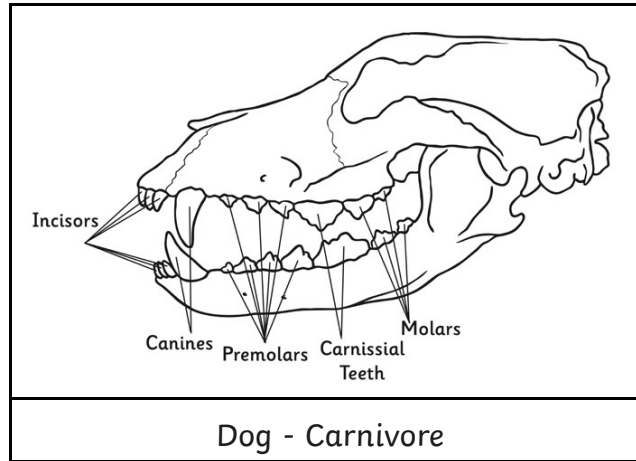
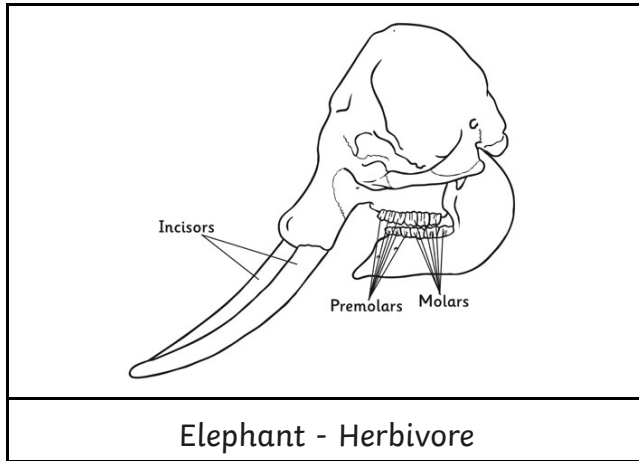
---

---

# Comparing Animal Teeth

I can identify the types and functions of teeth.

I can identify similarities and differences related to scientific ideas.



Are there any types of teeth that all three have in common? Why do they have these in common?

---

---

Explain any differences that you have found between the types of teeth the animals have:

---

---