

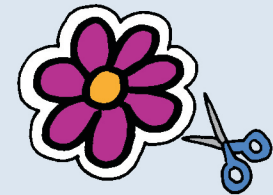
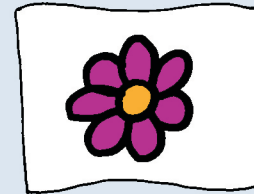


How to make a butterfly feeder

What you need:

- card 
- plastic bottle top 
- scissors 
- a straw or cane 
- sellotape 
- a pot with soil in it 
- cotton wool 
- colouring pens or pencils 
- sugar 
- water 

1 Draw a flower on your card and colour it in with bright colours, then cut it out.

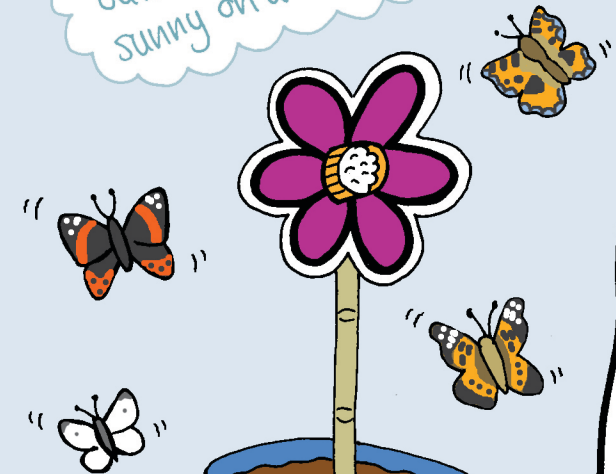


2 Stick a plastic bottle top in the centre.



Put your feeder outside, somewhere sunny on a warm day.

3 Use sellotape to stick the straw or cane onto the back of the flower, and stand it in the pot of soil.



4 Mix the sugar with some water and soak the cotton wool in the solution.

5 Put cotton wool inside bottle top.