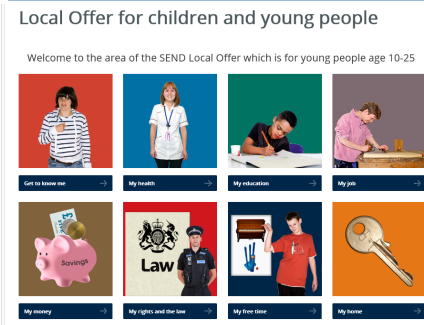


A one-stop website for all the information you need about special educational needs or disability (SEND) in Norfolk
Visit your Local Offer website at www.norfolk.gov.uk/send

Your Voice Forum



Just like the main Local Offer website, the Local Offer team want to talk to all of the people who use the Local Offer for children and young people website.

To check that we are including things that are important to young people, but also making sure we are using the right words, images and videos.

To help us do this we have created the “**Your Voice forum**”, this is a forum for young people with SEND aged between 10 and 25 to have a say on how the website is developed.

How does the forum work?

The Local Offer team visit a different school, college or support group every term to meet a group of children and young people. We visit twice, the first meeting is to discuss what people like and what they would like to change about the website. The second visit is to show what we have changed and see if there is anything they would like the next group to think about.

This terms visit.

This term we visited the City of Norwich School, where with 8 young people we discussed:

- What would be a good friendly URL for the website?
- What would be a better image for the My home section?
- What information about jobs do people want to see?
- What is missing from the website, or in the wrong place?

The young people gave us lots of really good ideas and we are now busy making changes, ready to show them later on this term.

Would you like to take part?

If you know a group of children or young people with SEND who would like to make the Local Offer for children and young people website even better please email send@norfolk.gov.uk

Future plans survey for year 10 pupils with an EHCP

Norfolk County Council will soon release a survey for young people in year 10 who have an Education, Health and Care plan (EHCP). This survey is to find out what people think they would like to do as they get older, it will cover:

- work
- spare time activities
- what type of housing they would like
- what they need to do to stay healthy and
- what they think they will need to learn to accomplish these things.

This will be available on the Local Offer website.

Dates for your diary

Sample from Support Events [[SEND Local Offer > About the Local Offer > Training and support events](#)]

- Positive Behaviour Support courses (April to October)
- ADHD parenting programmes (June & July)
- Family Voice ‘Family Chat’ (5 to 28 June)
- Autism Anglia ‘Norfolk Steps’ – Step On for parents (19 and 21 June)

Sample from Things to do [[SEND Local Offer > About the Local Offer > Training and support events](#)]

- Get started with music (11-15 June)
- Sunday Cinema with BUILD (24 June)
- Summer Deaf Festival in Norwich (13 July)